



®

care

#SomosCARE



@CareEcuadorOrg

care.ecuador

@care_ecuador

CARE Ecuador

ecu.care@care.org

(02) 2 253 615

www.care.org.ec



WHO ARE WE?



CARE has been present in Ecuador since 1962. For sixty years, we have been working on saving lives and addressing the root causes of poverty and inequity. In all its interventions, CARE aims to develop the agency, confidence and engagement of the people we work with, CARE also promotes the capacities of organizations and supports social movements to achieve transformations towards gender justice and social justice.



4
programs



17
projects



85
coworkers



3
local offices



10
provinces being
intervened



OUR ACTIONS

target populations facing poverty and affected by conflicts and emergencies. The rights of women and girls are at the center of our actions, as well as promotion of gender equality. We work alongside migrants, refugees, selfemployed women and people affected by climate change. In all contexts, we work with people facing discrimination based on ethnicity, health status, age, class, occupation, or sexual orientation. Our humanitarian action is guided by humanitarian principles and we aim to reach the most vulnerable populations.

- Nationwide HIV prevention and response strategy.
- Response to COVID 19 and support for vaccination programs.

- Women, dignity and work.
- Education free from violence.
- Feminists in action.



- Humanitarian response to the Venezuelan crisis.
- Humanitarian response to COVID-19.
- Alerta Veci | Projects for risk and disaster prevention.

- Andean women and climate change.
- Rural women and climate change.
- Weaving Pathways: towards economic and financial inclusion.

Gender-sensitive approach

Advocacy strategy

Evidence-based information

Positioning strategy

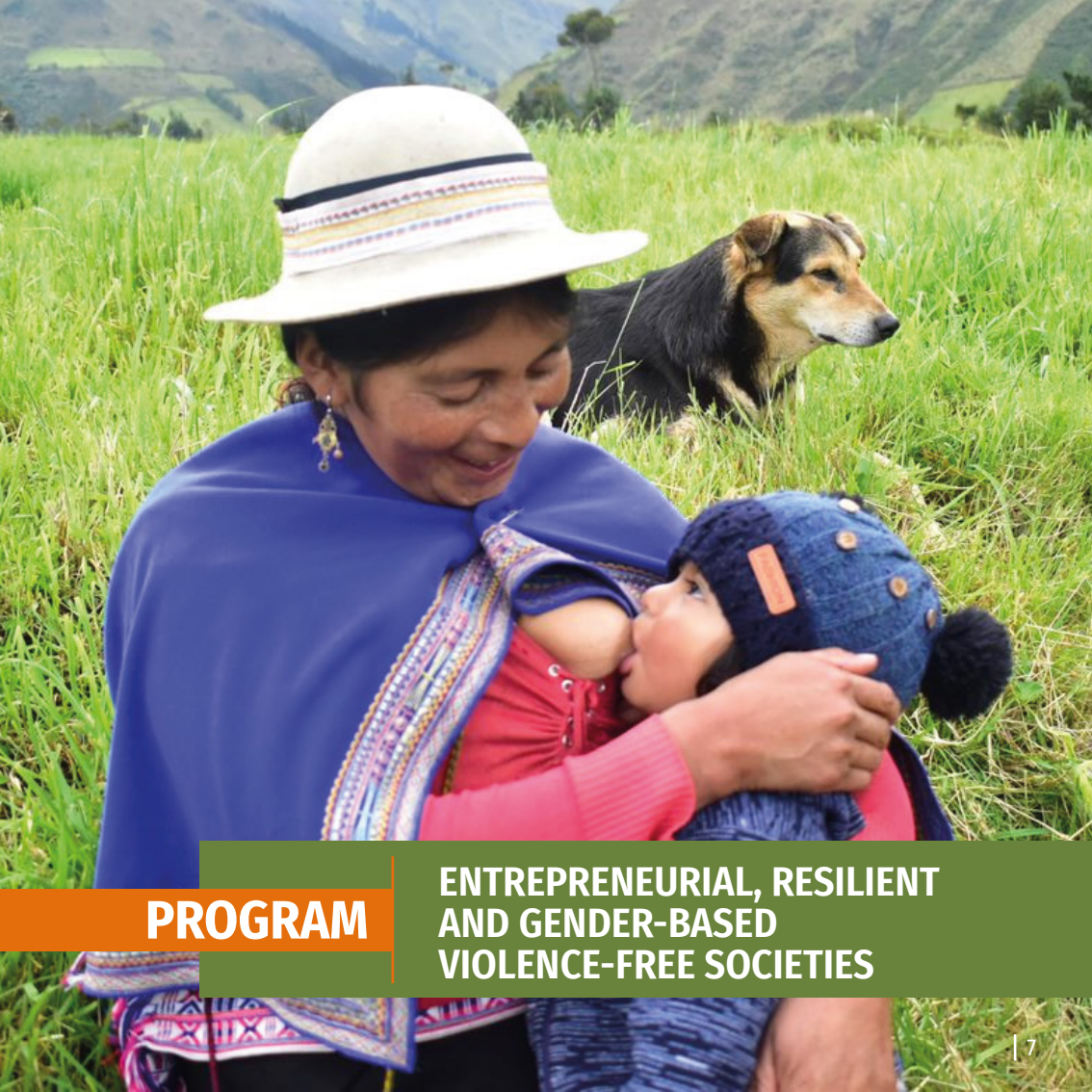


PROGRAM

**DEMOCRATIC, INCLUSIVE AND
INTERCULTURAL SOCIETIES**

The Democratic, Inclusive and Intercultural Societies program aims to achieve gender equality through the promotion of autonomy, leadership, advocacy and empowerment of girls, adolescents, women, LGBTIQ+ people and their organizations. The program supports collectives and movements' efforts to overcome discrimination and exclusion and to eradicate gender-based violence.





PROGRAM

**ENTREPRENEURIAL, RESILIENT
AND GENDER-BASED
VIOLENCE-FREE SOCIETIES**

El programa sociedades emprendedoras, resilientes y libres de violencia de género promueve procesos organizativos de mujeres y jóvenes para alcanzar la justicia económica y justicia climática e impulsa acciones para garantizar sus medios de vida. Desarrolla iniciativas de adaptación al cambio climático, para alcanzar la seguridad alimentaria, producción agroecológica, conservación y restauración de ecosistemas, así como el manejo sostenible de los territorios.





PROGRAM

**SOCIETIES PREPARED FOR
RISKS AND DISASTERS**

The Societies prepared for risks and disasters program aims to mobilize communities to prevent and mitigate risks and disasters, and to develop capacities to respond to emergencies and disasters.

Regarding humanitarian action, CARE provides protection and sexual and reproductive health services with a gender-sensitive approach in emergencies.





PROGRAM

**HEALTHY AND
EMPOWERED SOCIETIES**

The Healthy and Empowered Societies program promotes the exercise of sexual and reproductive rights of women, girls, adolescents, LGBTIQ+ people and sex workers, by supporting their empowerment. The program supports organizations working for this target groups and links them with health providers to overcome the socioeconomic, cultural and political barriers that affect these vulnerable populations, thus allowing them to exercise their rights to comprehensive health and autonomous decisions about their health.





HOW DO WE ACT?



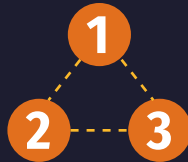
THEORY OF CHANGE

Increasing awareness, self-esteem,
confidence, skills and
capacities for transformation.

DEVELOPING PEOPLE'S AGENCY

CHANGING RELATIONSHIPS

Addressing the ongoing inequality
in intimate relationships,
within family, in social and
political networks, in the markets,
and in community and
citizen groups.



TRANSFORMING STRUCTURES

Discrimination and exclusion
can be perpetuated through
laws, policies, norms and social
mores. We work with people and
social movements to transform
these structures.





WHERE ARE WE LOCATED?



Where do we have HIV testing and screening centers?



- Santo Domingo – Sto. Domingo
- Ibarra - Imbabura
- Loja - Loja
- Lago Agrio - Sucumbíos
- Esmeraldas y Quinindé - Esmeraldas
- Riobamba - Chimborazo
- Ambato - Tungurahua
- Portoviejo, Manta, Chone, Sucre y El Carmen - Manabí
- Cuenca - Azuay
- Machala, Pasaje y Santa Rosa - El Oro

Where do we intervene through our Partners?



- Pichincha
- Carchi
- Guayas
- Sucumbíos

Where do we have offices?

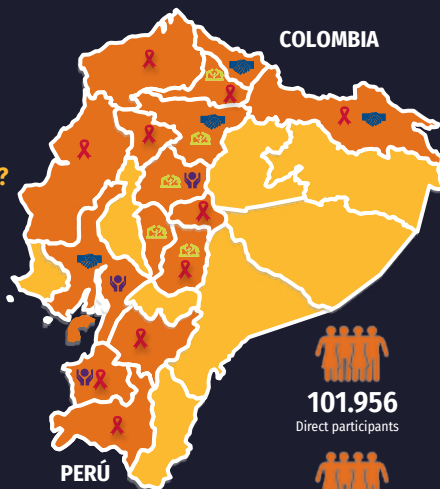


- Latacunga - Cotopaxi
- Huaquillas – El Oro
- Guayaquil - Guayas

Where do we promote gender equality in climate change management?



- Cayambe - Pichincha
- Pedro Moncayo - Pichincha
- Otavalo - Imbabura
- Cotopaxi
- Chimborazo
- Bolívar



COLOMBIA

PERÚ



101,956

Direct participants



44,897

Indirect participants



1'008.000

People reached by
communication
campaigns



ACHIEVEMENTS



We are members of the Civil Society Alliance for Child Nutrition.



We lead sexual and reproductive health care through community mobilization.



We promoted the creation of the Interinstitutional Roundtable to support paid domestic workers.



We promoted the ratification of ILO Convention C190 on the elimination of violence and harassment in the world of work.



We promoted the creation of the first social business of women domestic workers as an income-generation alternative.



We support the formation of Village Savings and Loan Associations.



We promote the use of cash-based assistance for survivors of gender-based violence in our humanitarian response.



We designed the Emergency and Disaster Response Plan in coordination with the Municipality of Quito.



We work alongside women producers to promote agroecological production.



Together with the Ministry of Education, we built a case management model to address sexual violence in schools, as well as Single Roadmaps in Guayaquil, Cañar, Quindé and Lago Agrio to address cases of sexual violence in schools through the Rights Protection System.

OUR DONORS



OUR PARTNERS



PLATFORMS





Download our
MAGAZINE

www.care.org.ec



*We work alongside collectives and social movements
to achieve gender, economic, social and climate justice.*